

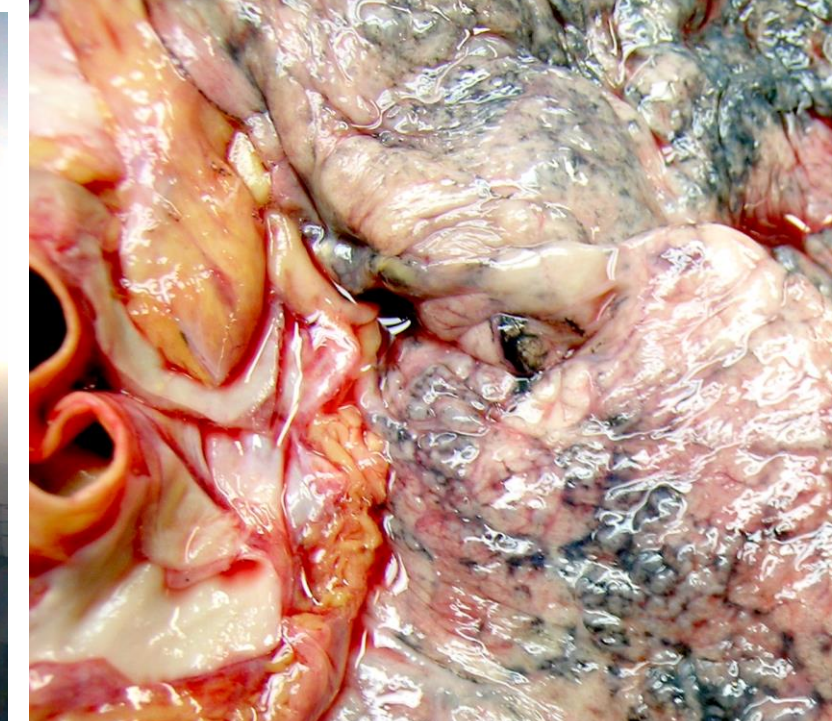
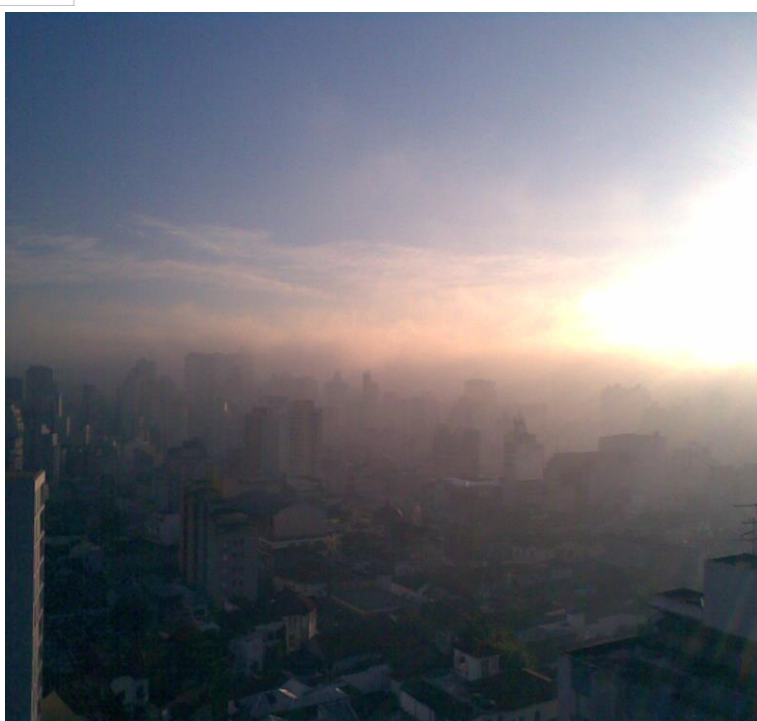
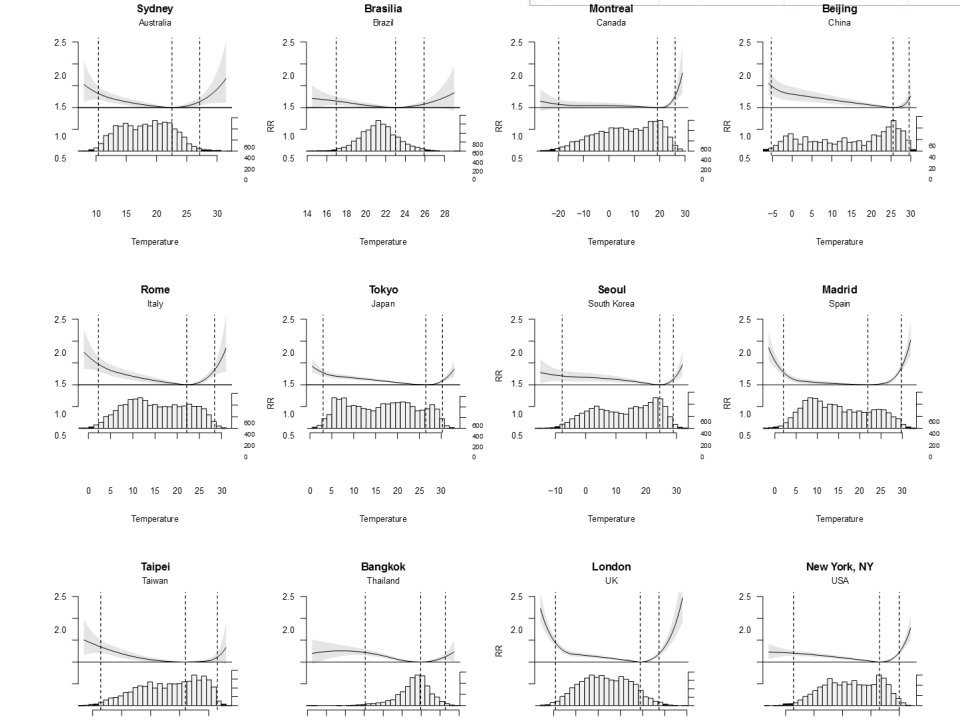
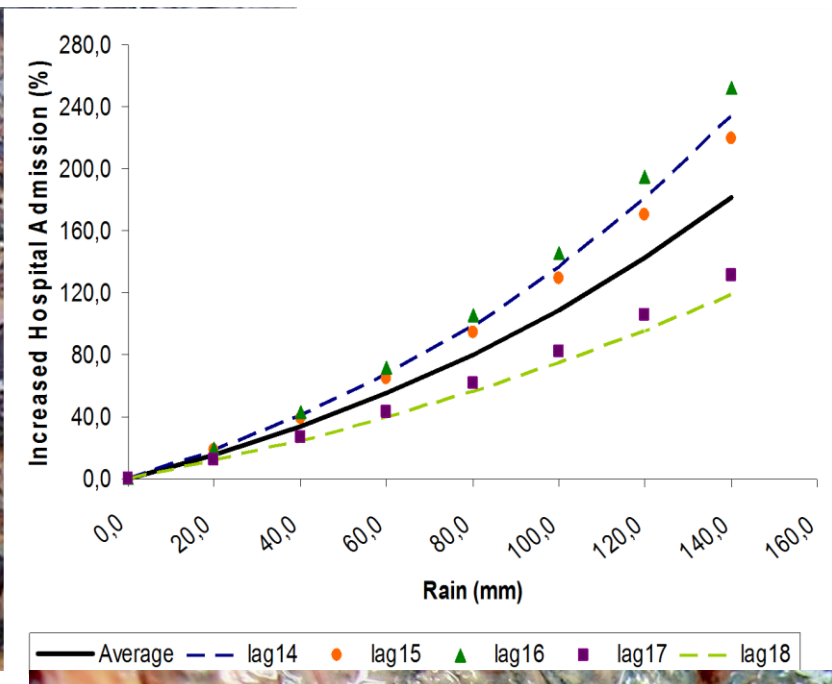
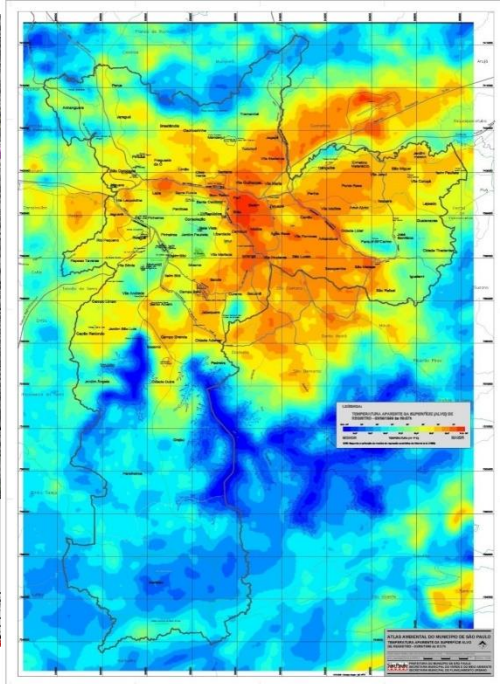
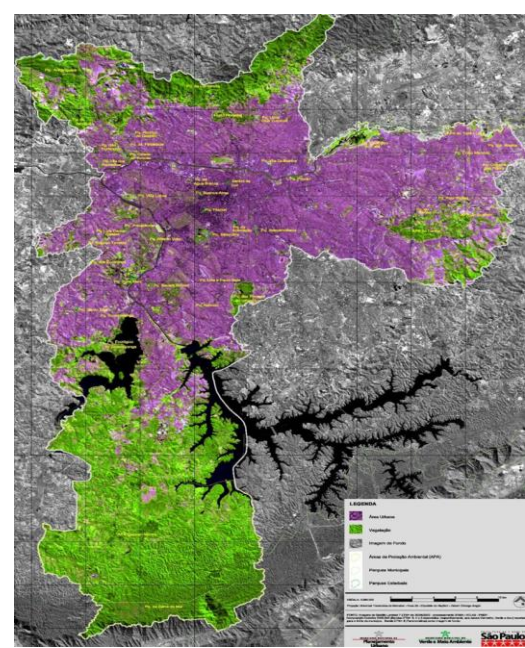
# Biomonitoring health effects of climate and air pollution in the urban scenario

Paulo Saldiva

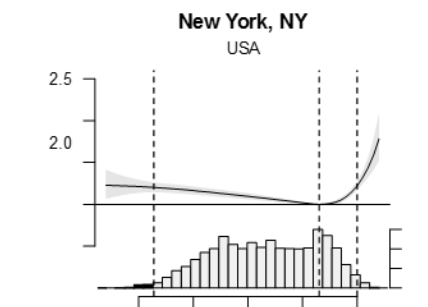
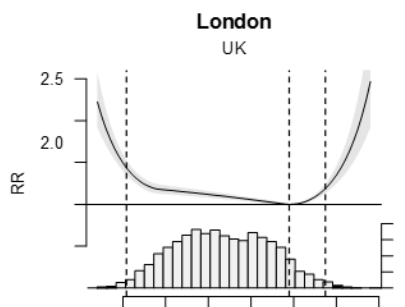
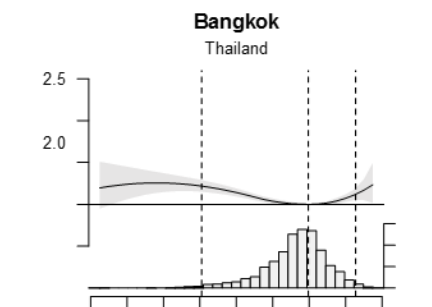
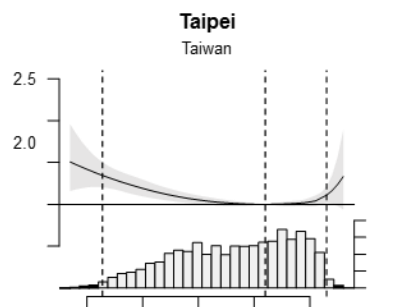
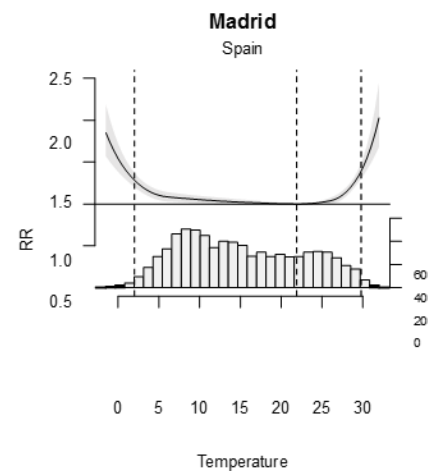
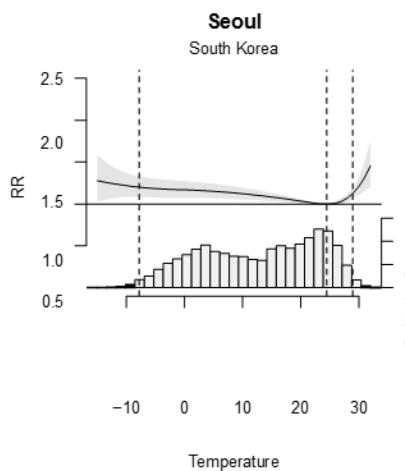
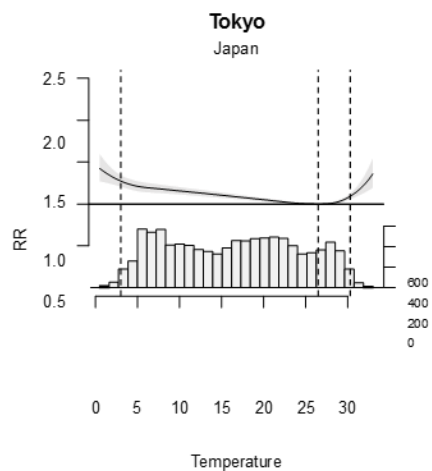
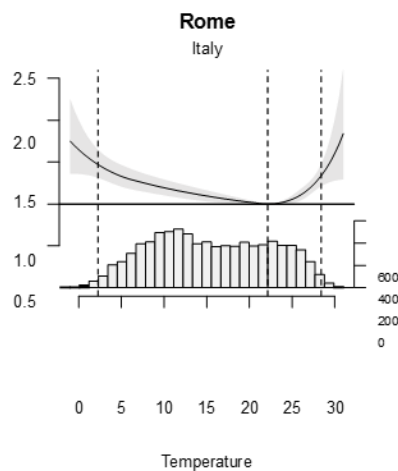
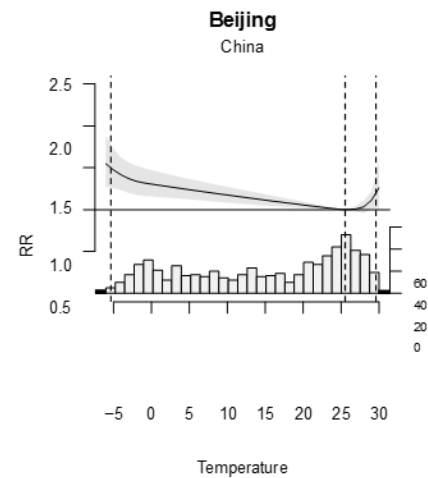
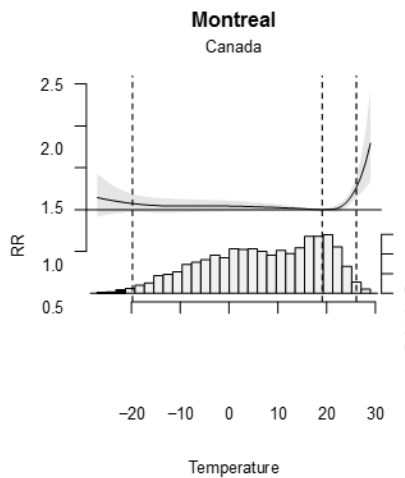
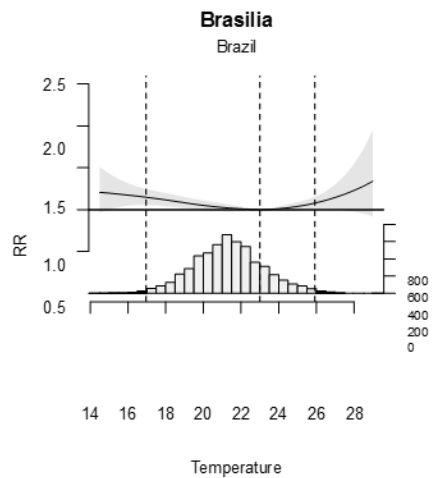
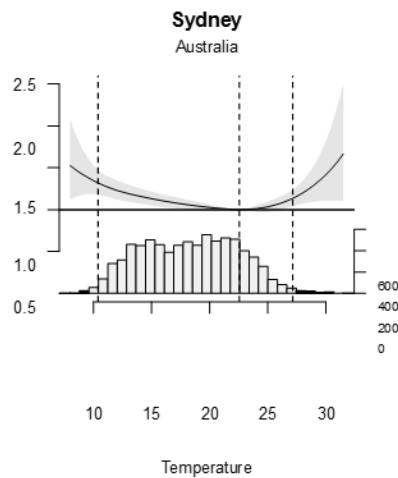
Institute of Advanced Studies

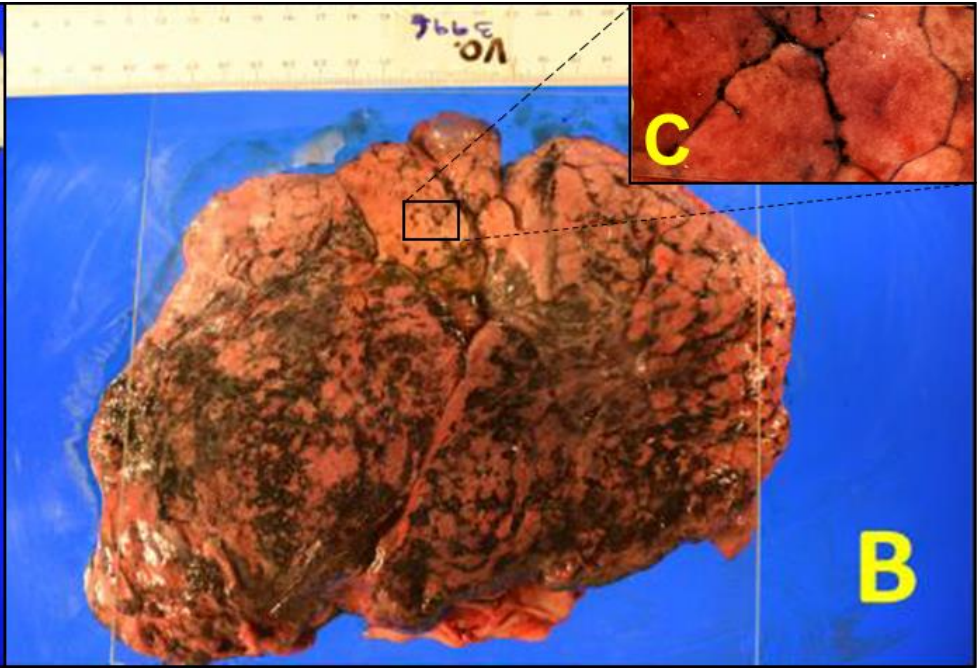
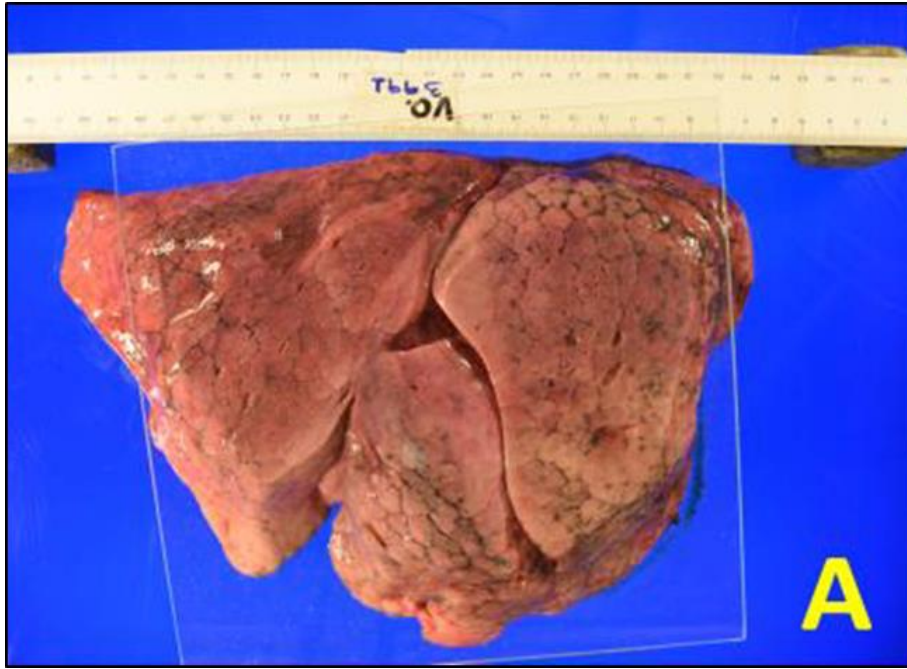
University of São Paulo

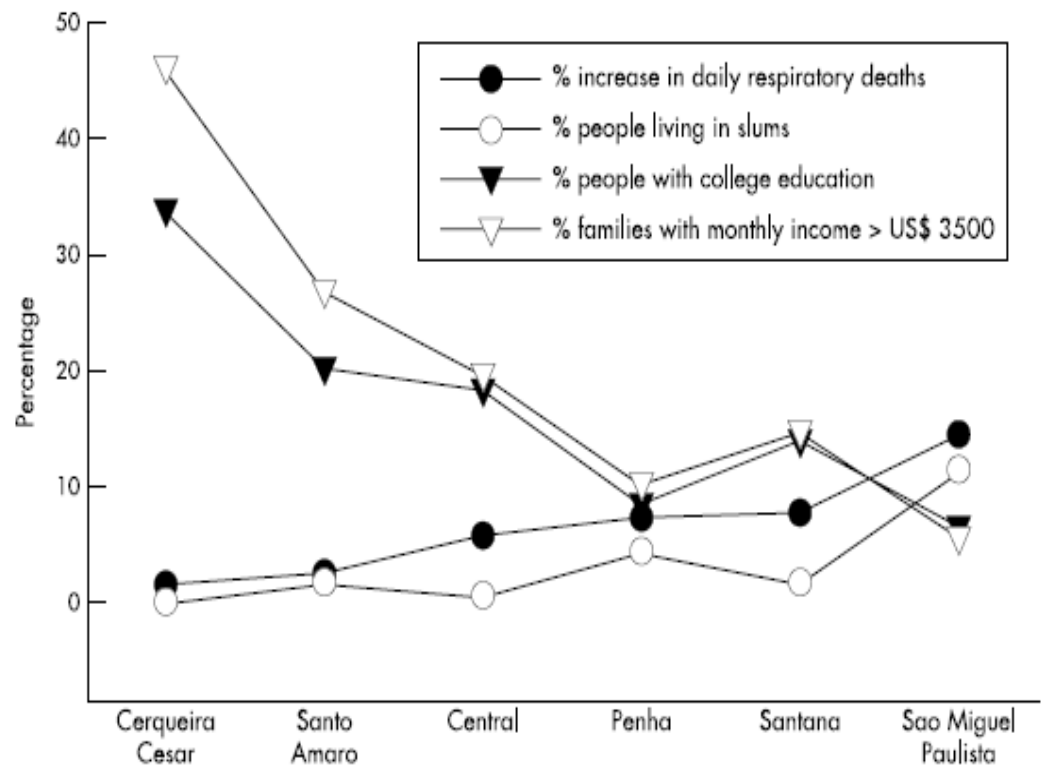
[iea@usp.br](mailto:iea@usp.br)



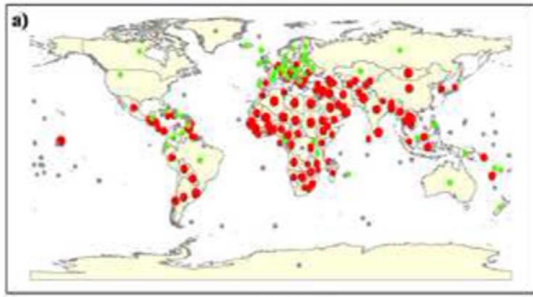






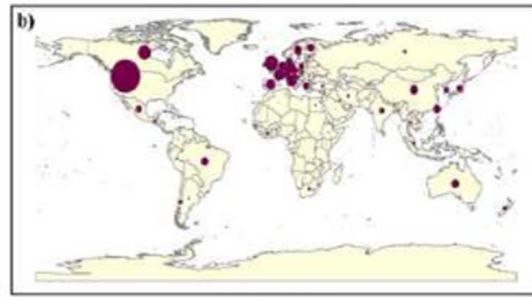






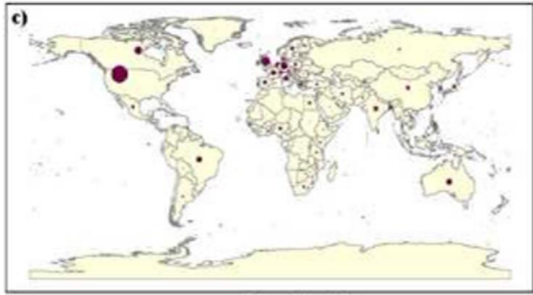
PM10 ( $\mu\text{g}/\text{m}^3$ )

- 0 - 5
- 6 - 20
- 21 - 30
- 31 - 50
- 51 - 70
- 71 - 142



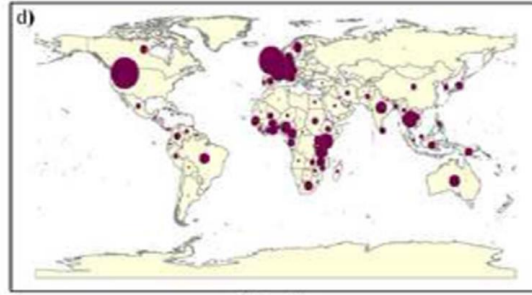
Air pollution articles

- 1
- 10
- 1,000



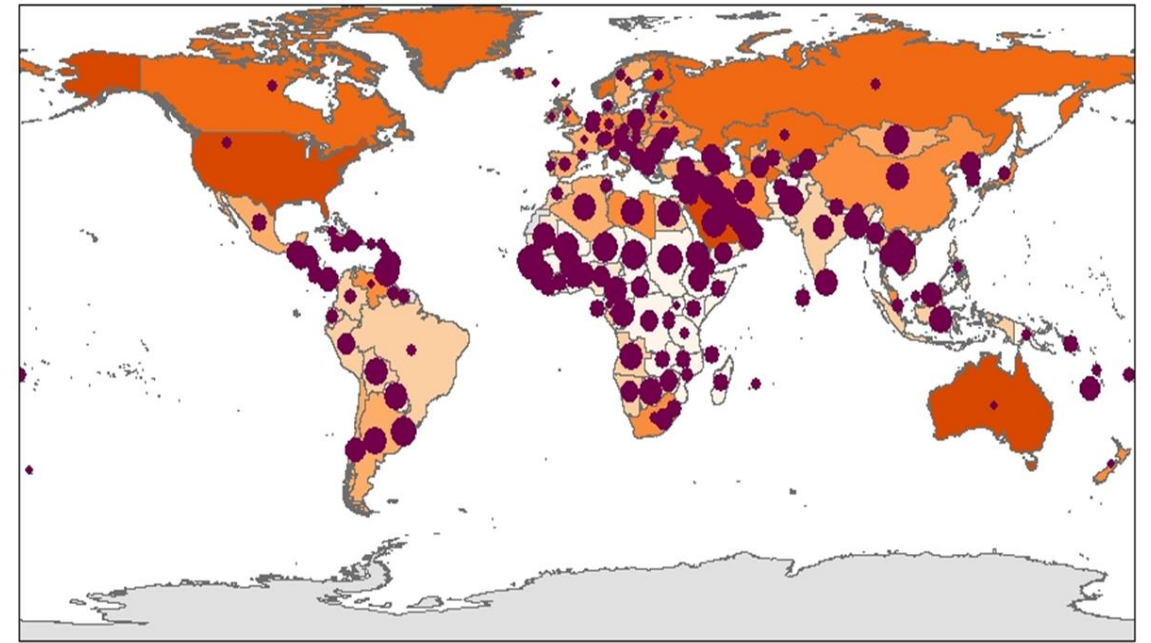
Water quality articles

- 1
- 10
- 1,000

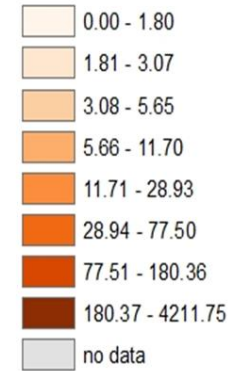


Malaria articles

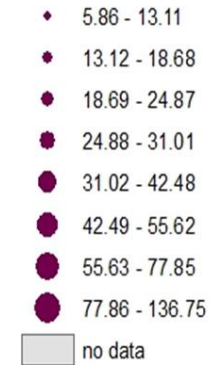
- 1
- 10
- 1,000

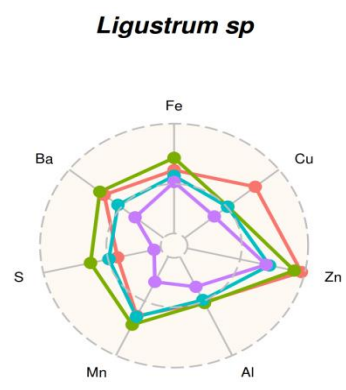
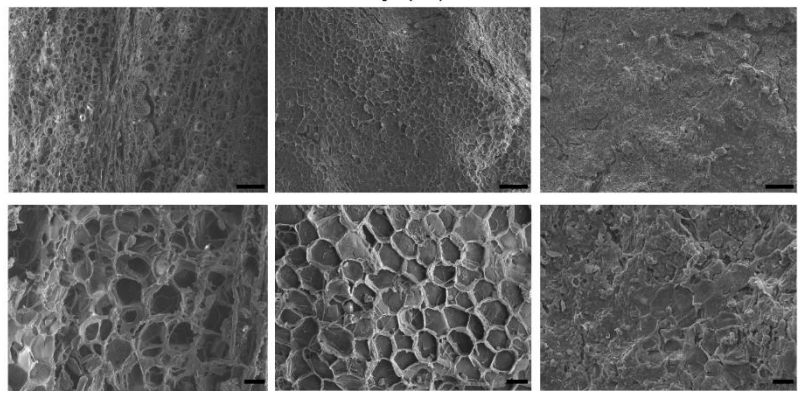
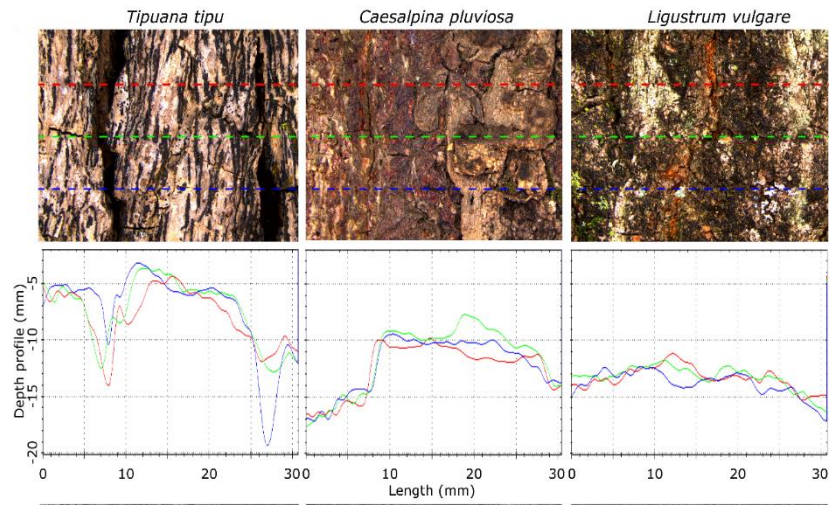


CO2 emissions  
(metric tons per capita)



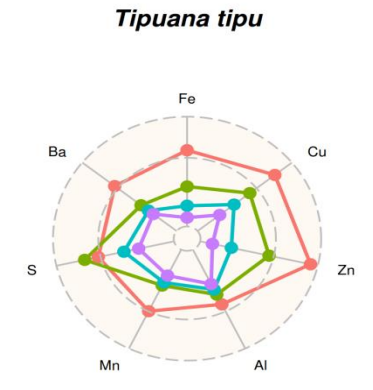
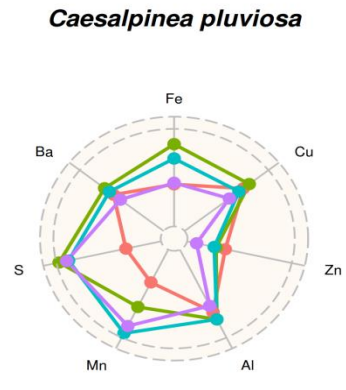
PM10  
(micrograms per cubic meter)





Street Classification

- Arterial
- Collect
- Local I
- Local II



# Suggestions

- To elaborate a joint paper addressing the following topics
  - Human responses to climate
  - Mechanisms of biological adaptation
  - Critical windows of vulnerability
  - Co-morbidities as effect modifiers
  - What to measure?
  - Different time resolutions for pollution and weather