

Aerodyne Mobile Laboratory

Miguel Zavala, MIT

Claudio Mazzoleni, Los Alamos National Laboratory

Berk Knighton, Montana State University

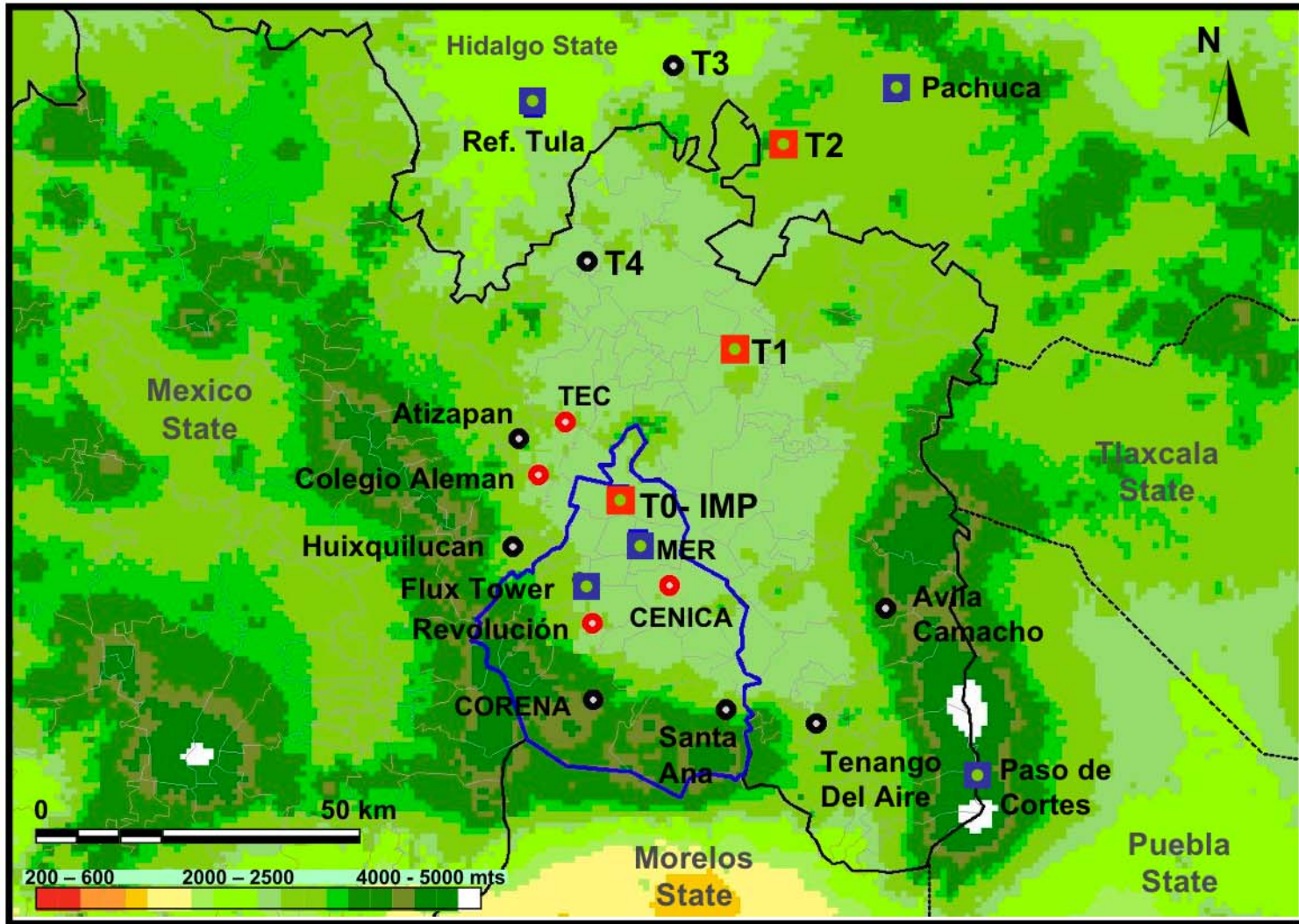
Dwight Thornhill, Virginia Tech

Eduardo Deustúa, INE

Aerodyne; Tim Onasch, Ezra Wood, Scott Herndon

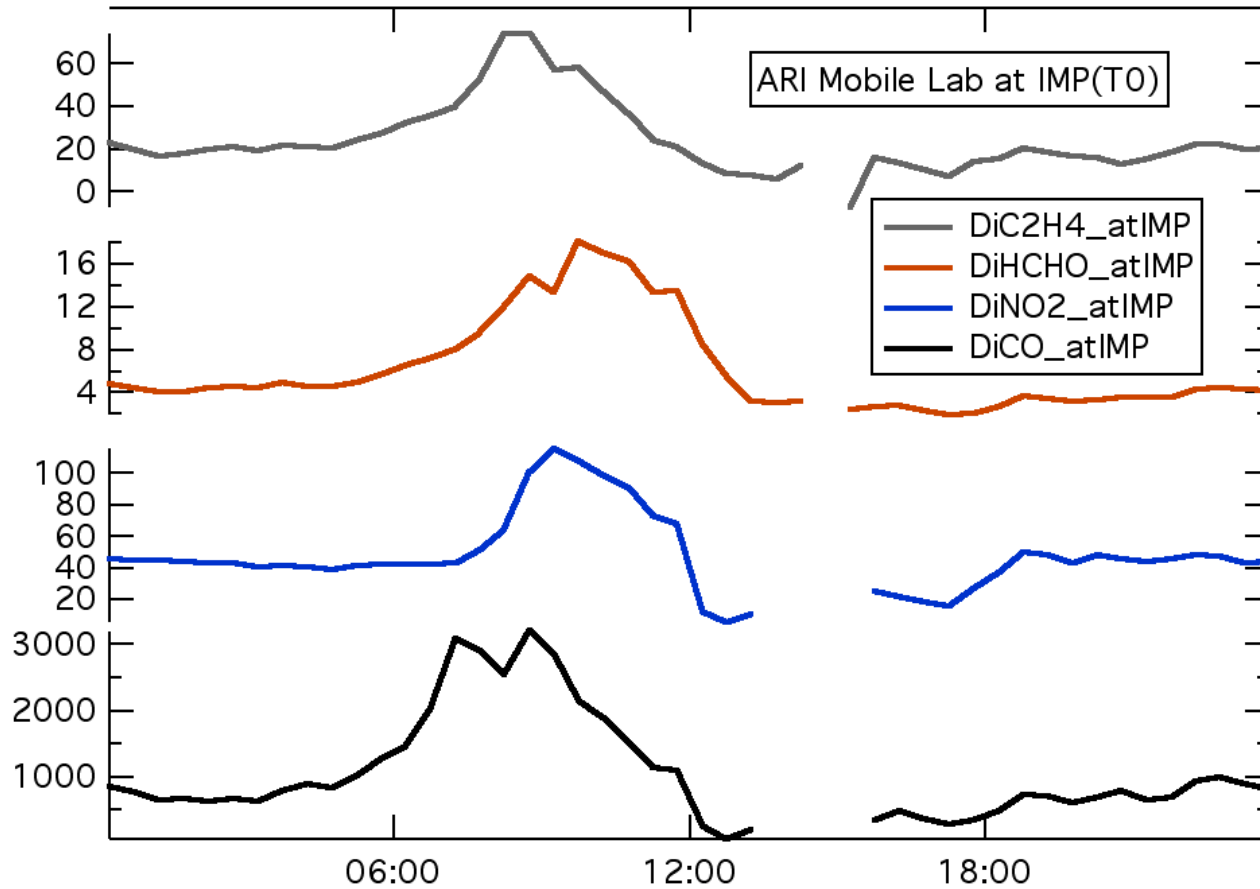
Doug Worsnop & Chuck Kolb

MILAGRO Monitoring Sites



- Fixed site
- Mobile site
- Supersite
- Other measurements

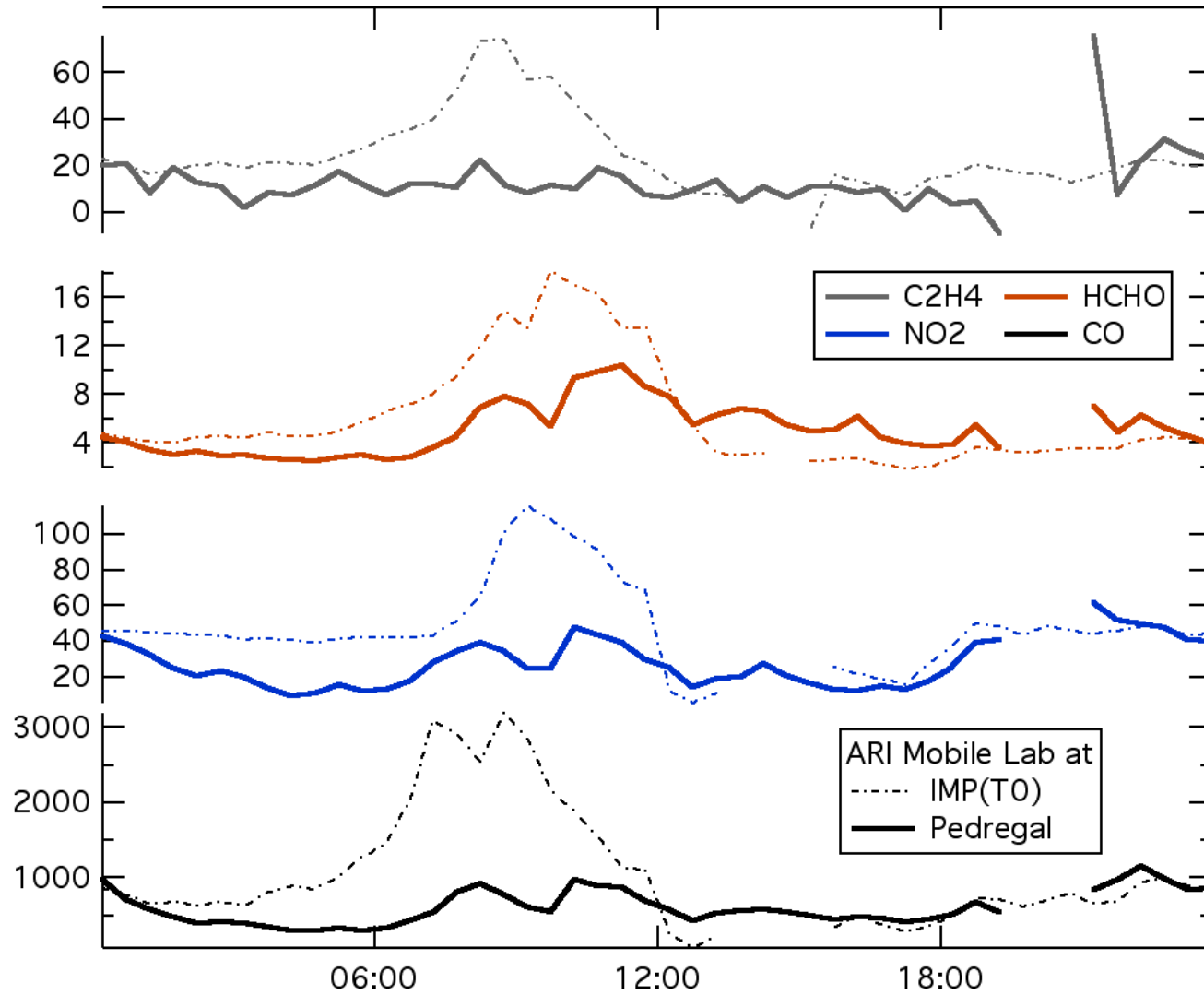
IMP/T0 Data



Pedregal Site



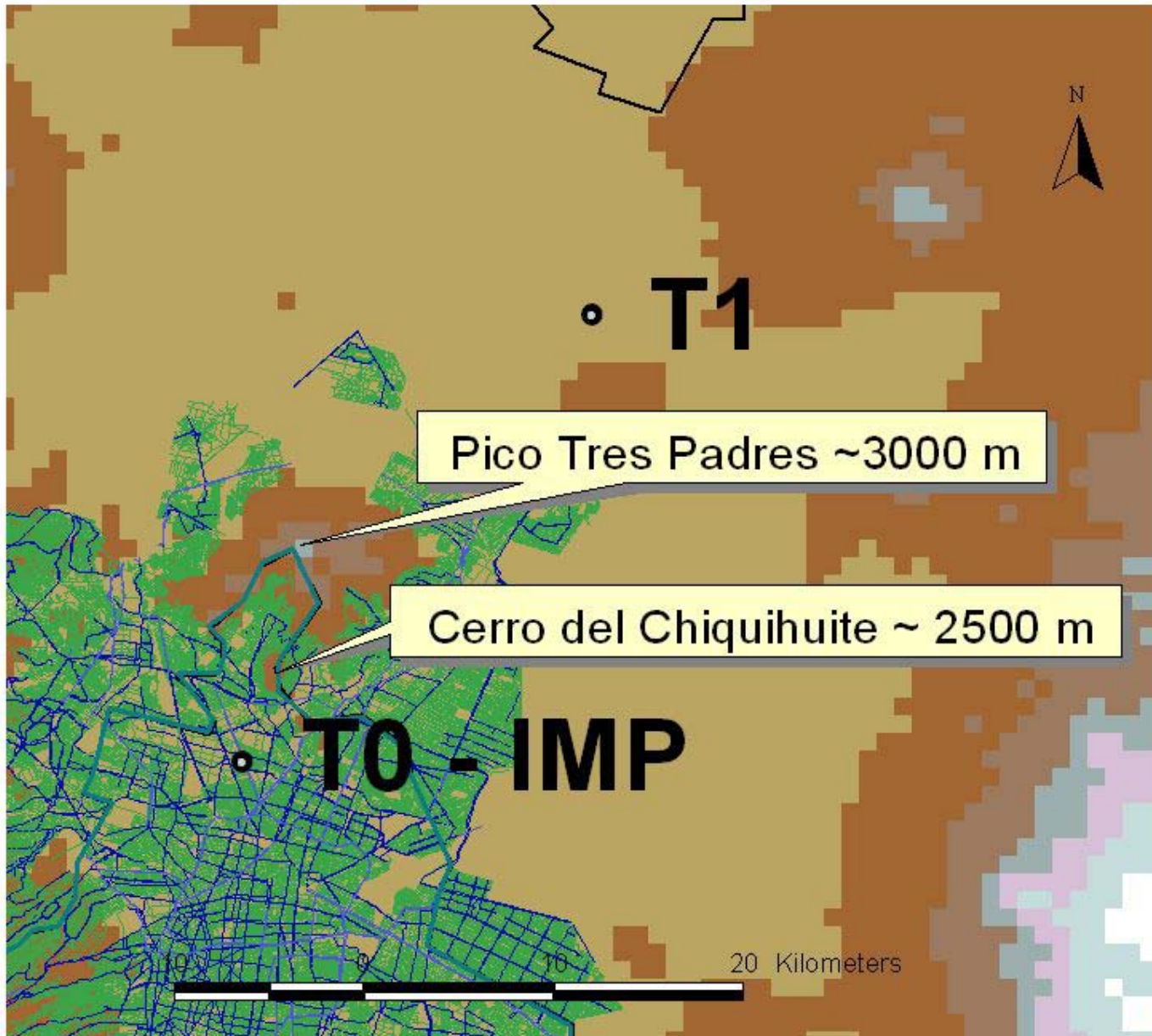
Diurnal Profile at PED



Pico de Tres Padres



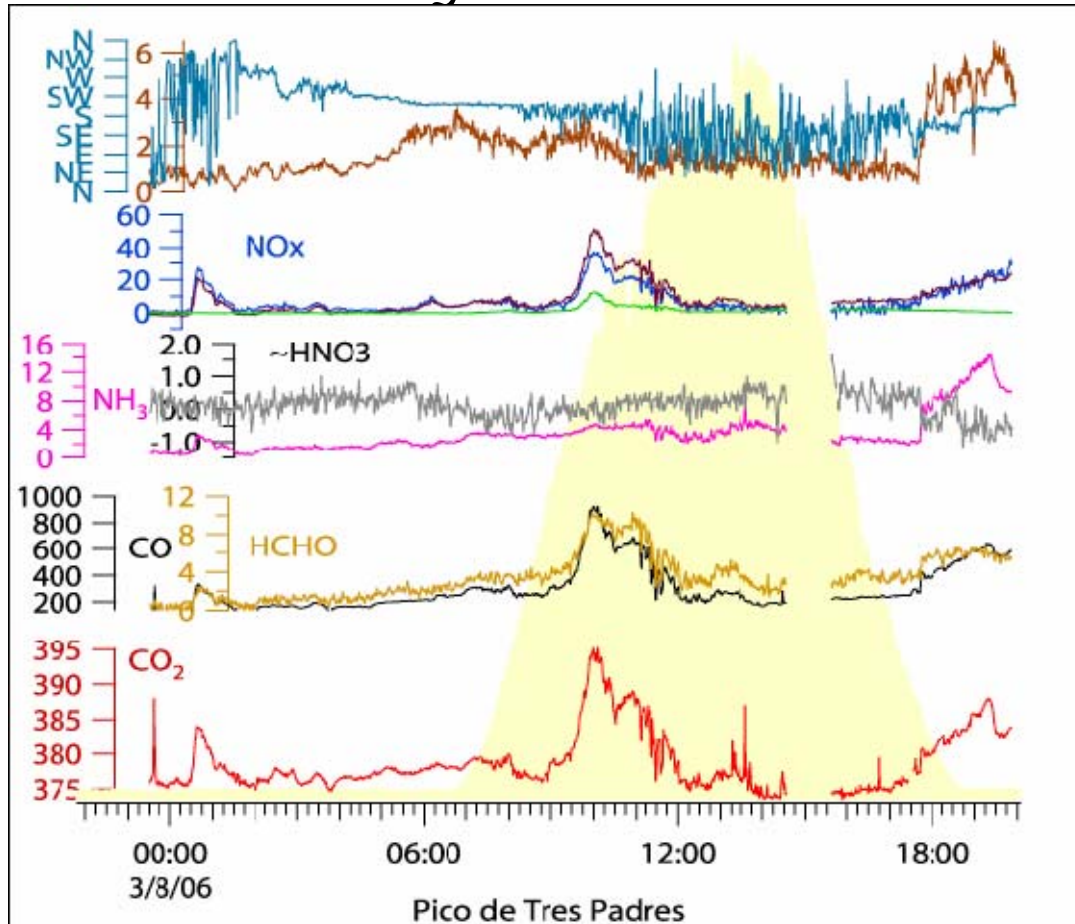
Pico de Tres Padres



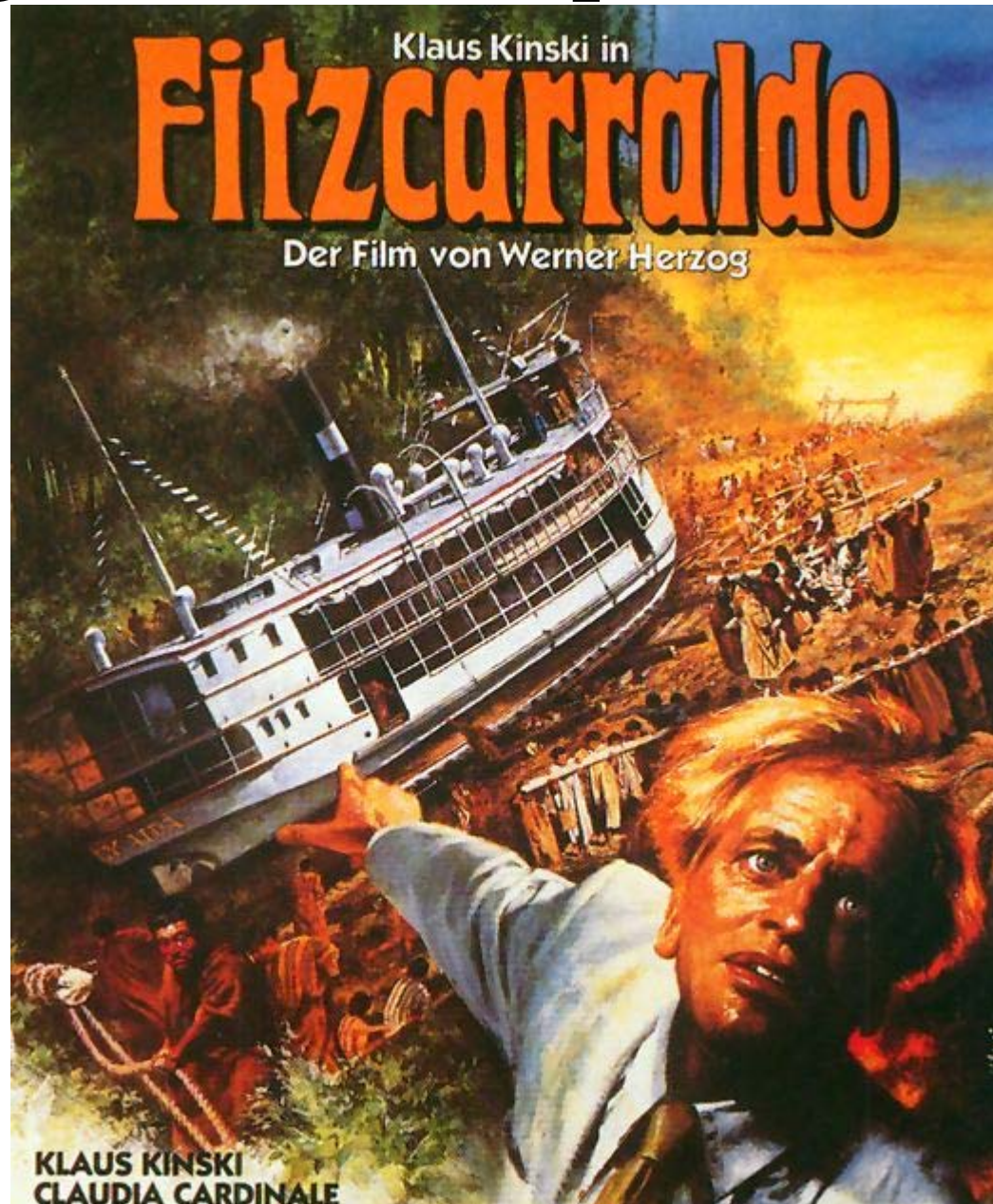
Pico de Tres Padres



Day 1 PTP



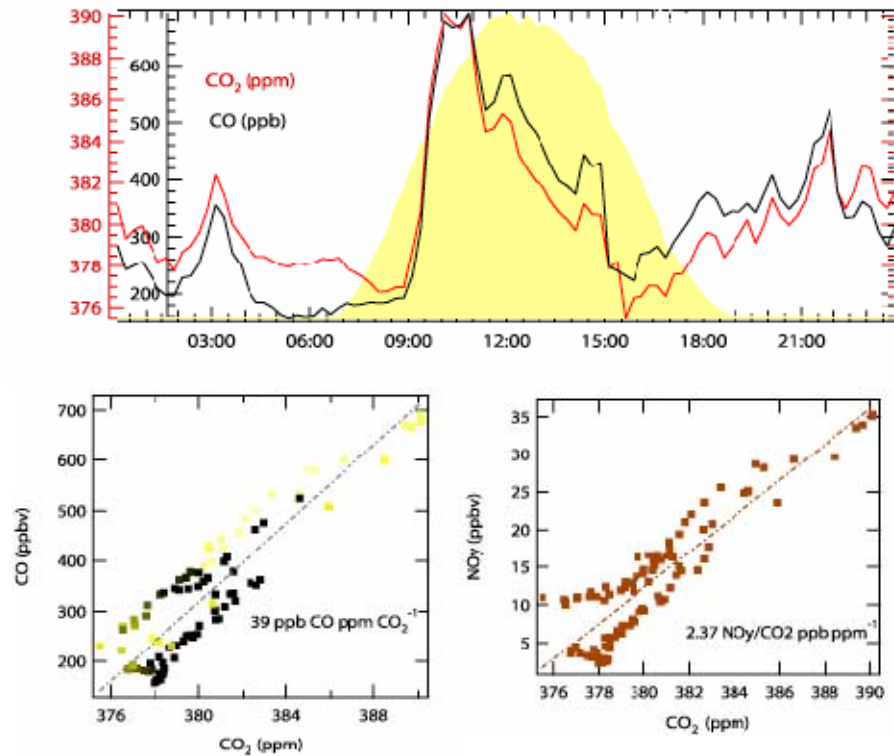
Getting the Truck up the Mountain



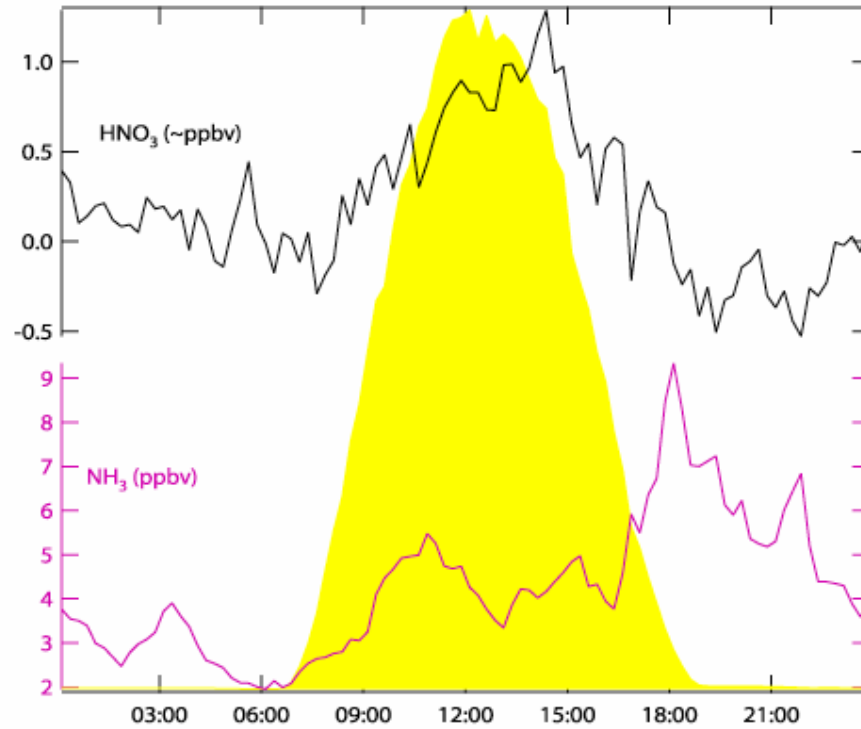
MCMA before and after mixing layer reaches our elevation



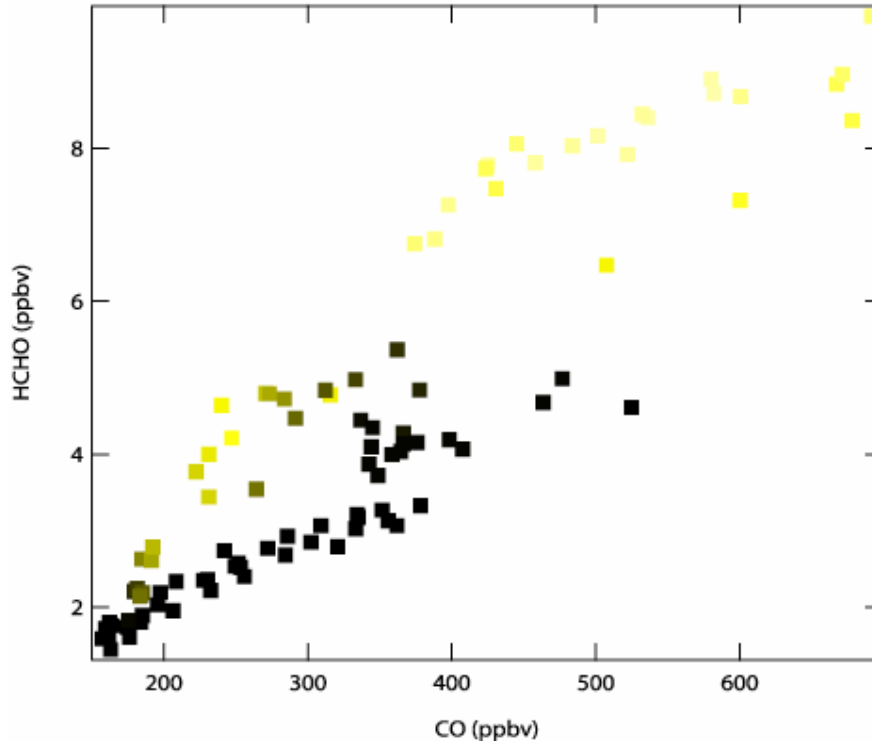
CO CO₂ Ratios and a quick NO_x/CO₂ number



HNO₃ Measurement(?) & NH₃

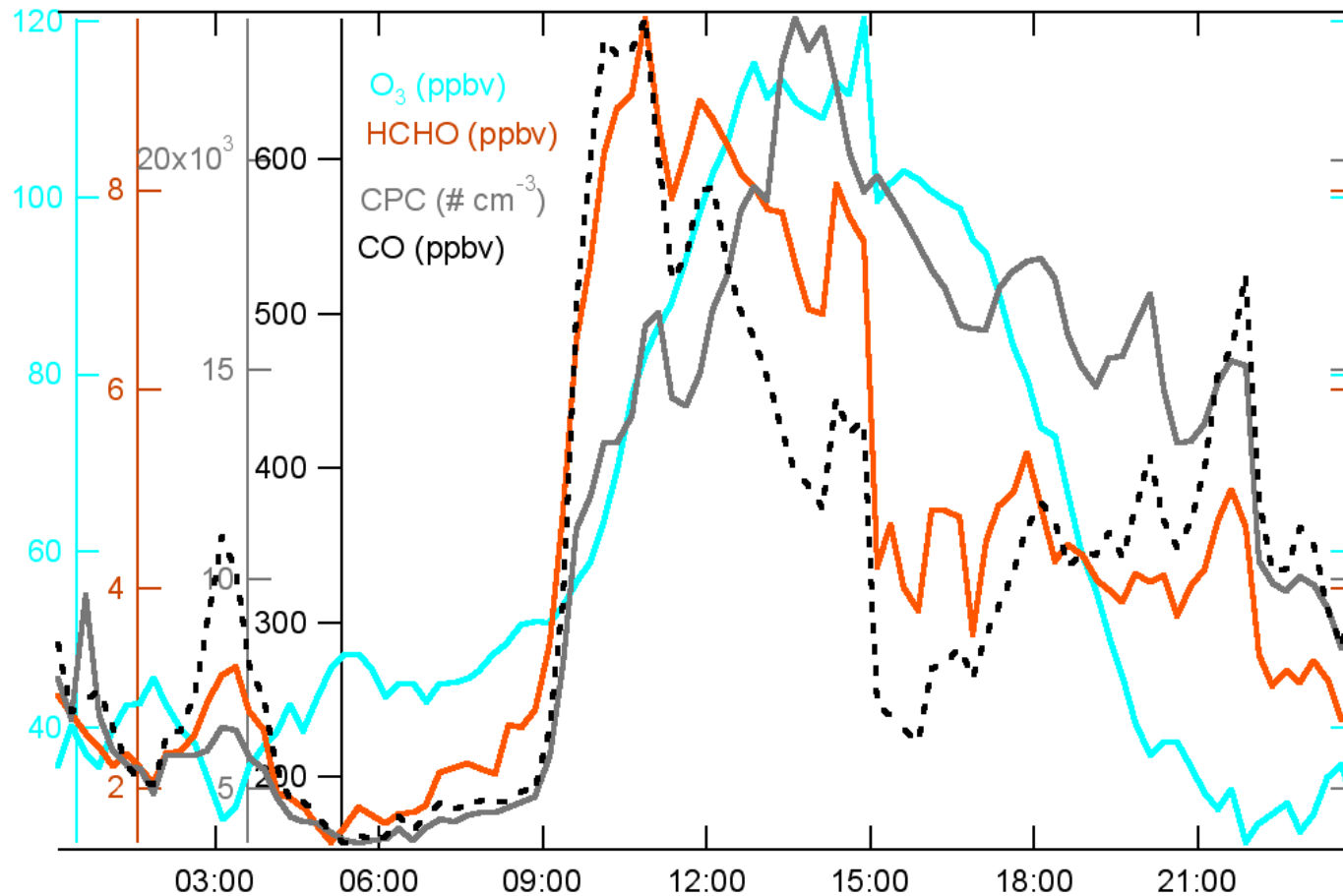


HCHO and CO

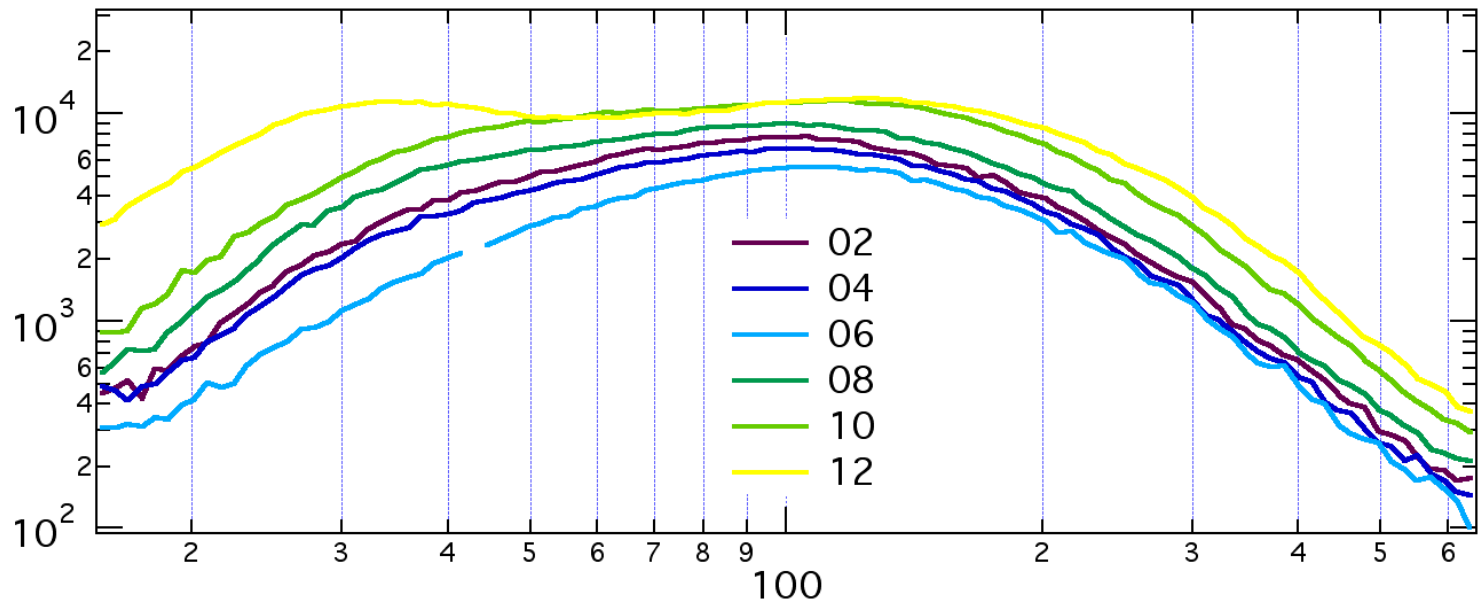
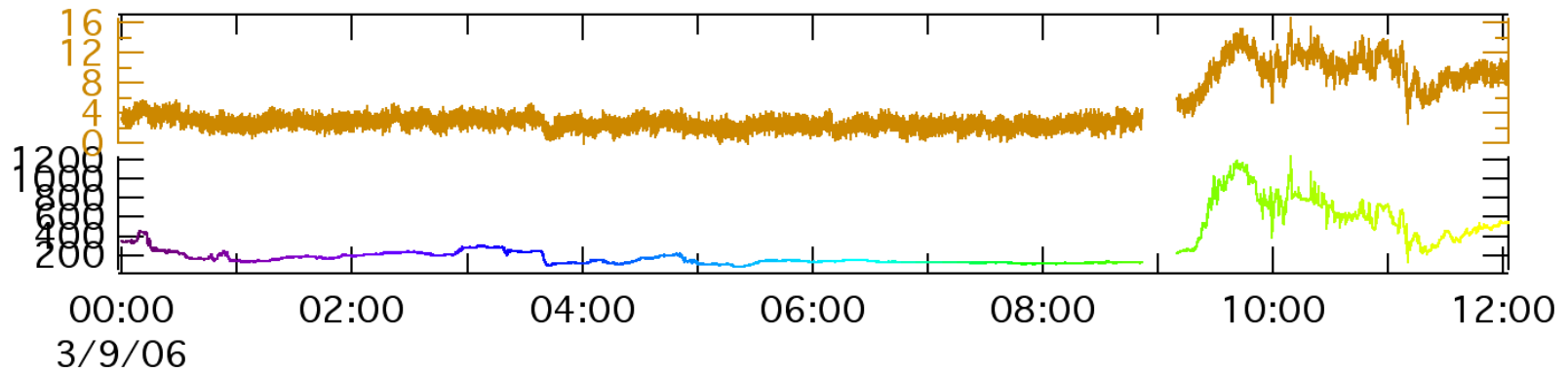


The noon time production of HCHO is more efficient than the pollution layers trapped at night

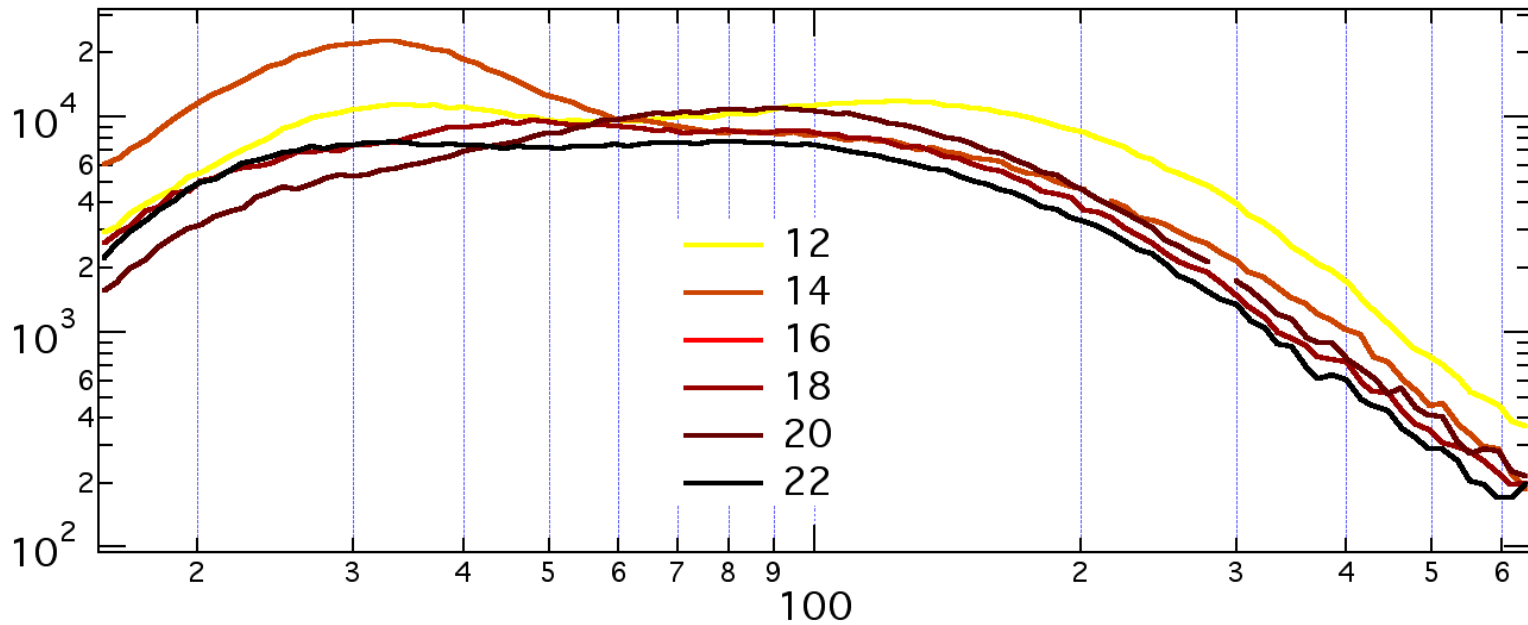
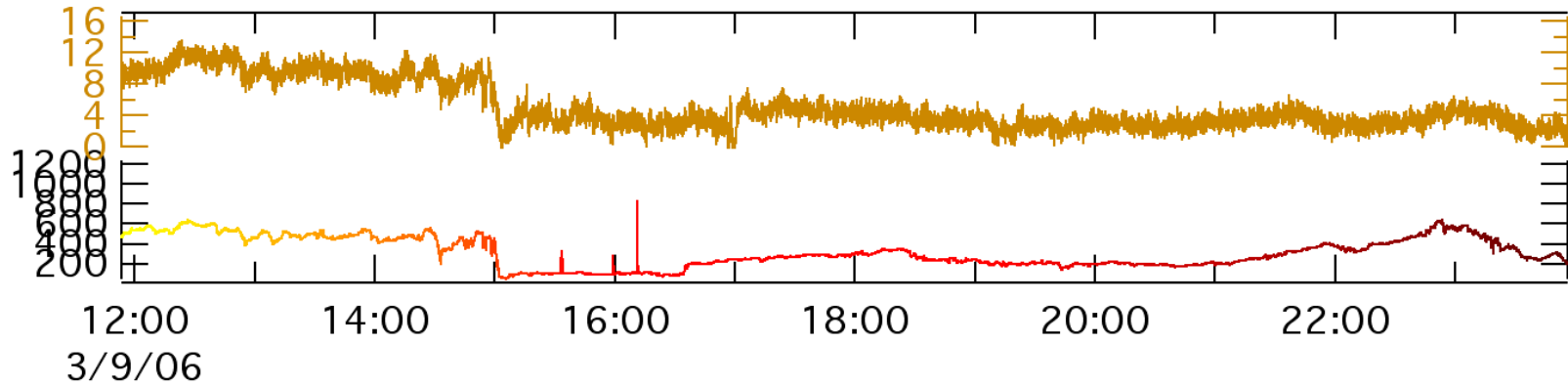
Photochemical Processing at PTP



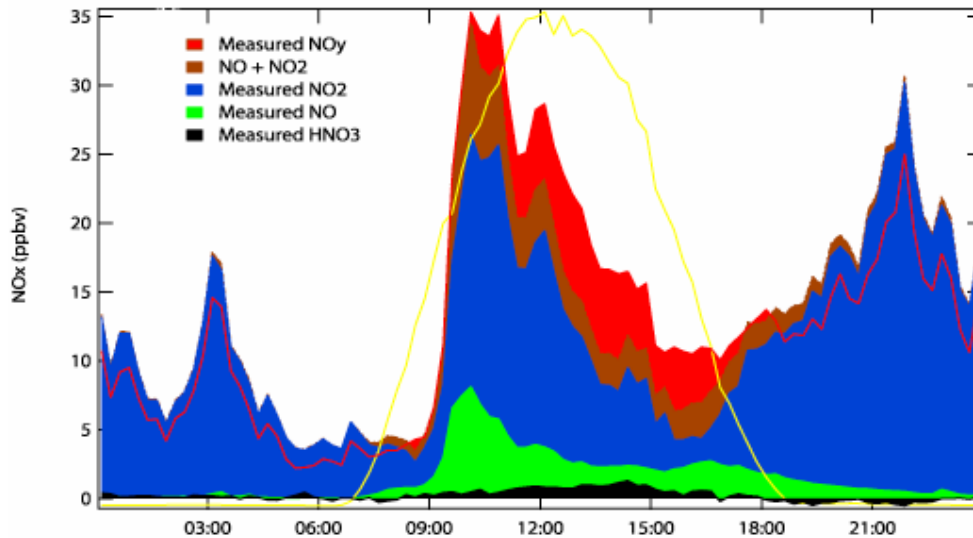
Size dependence of the particle production (1/2)



Size dependence of the particle production (2/2)

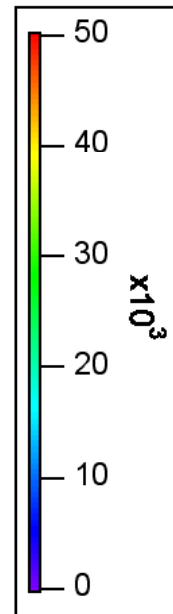
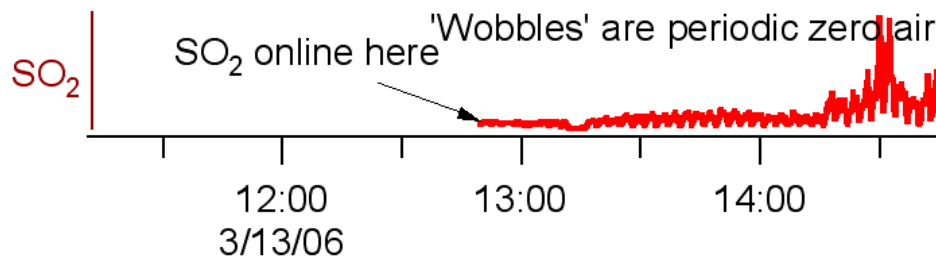
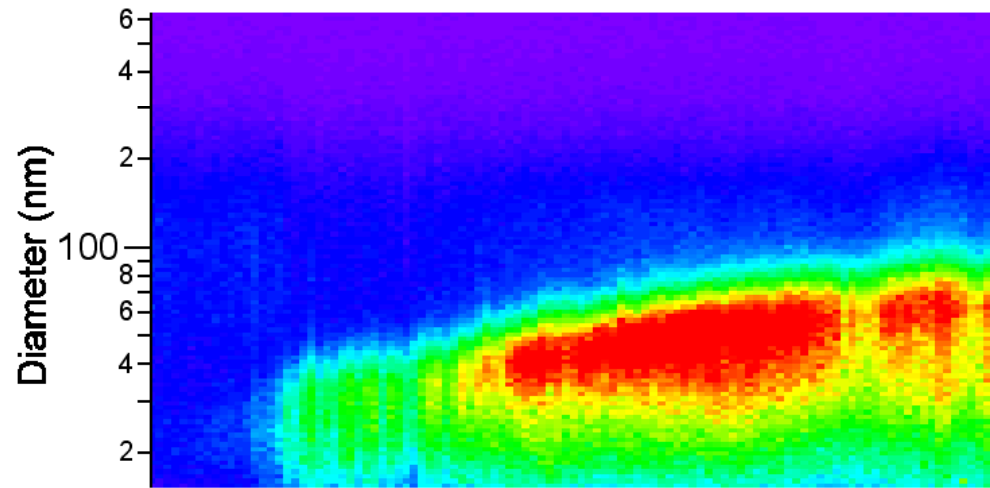
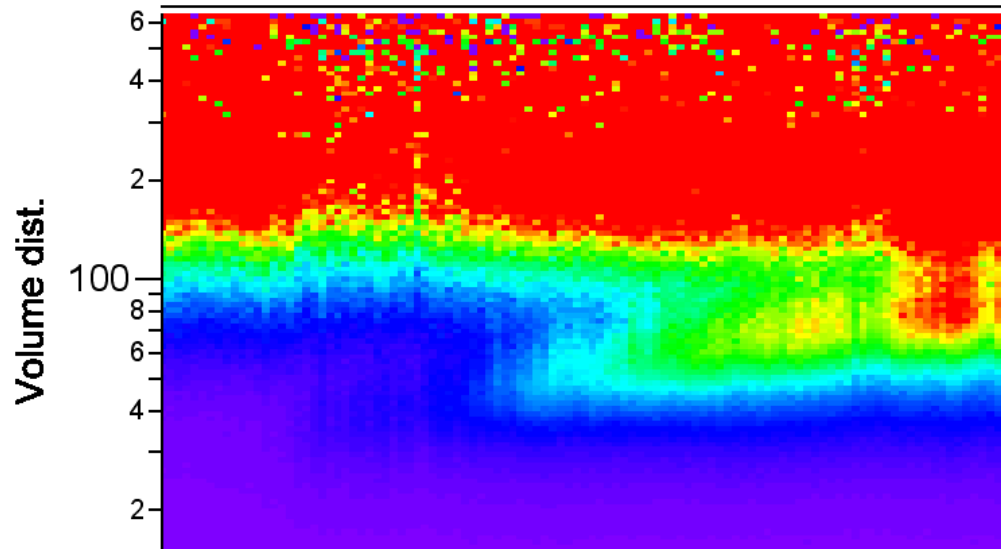


NO_x Budget

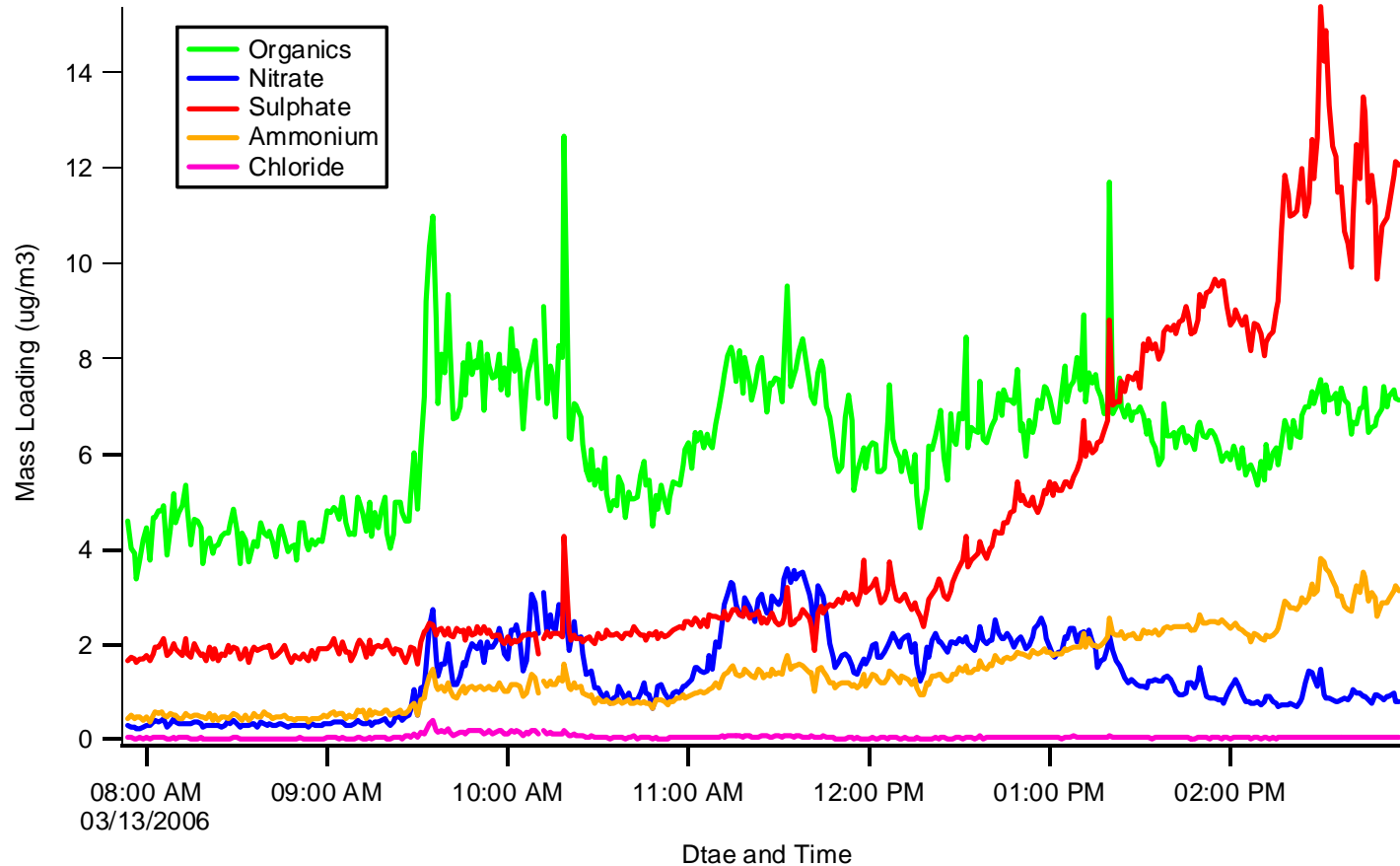


This will require full QA in order to be quantitative, however the initial look indicates we are seeing NO_x species during the daylight hours

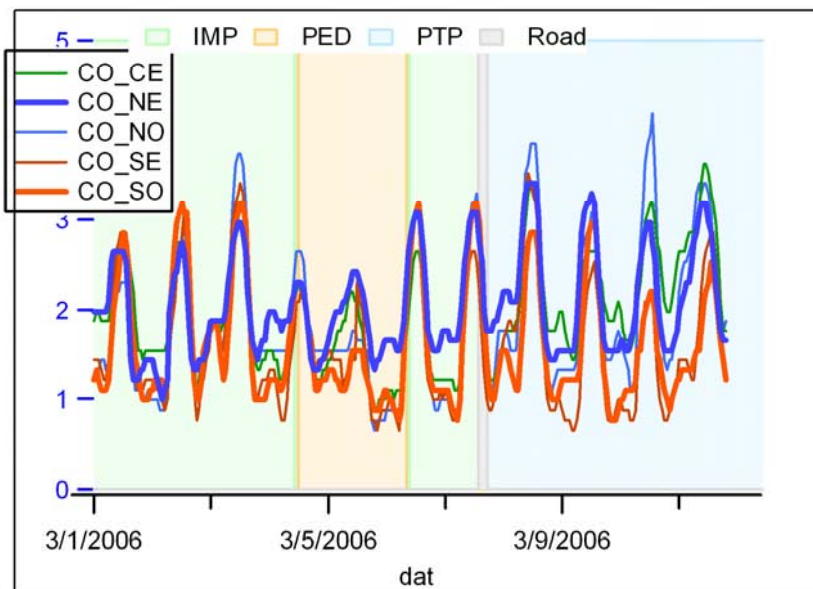
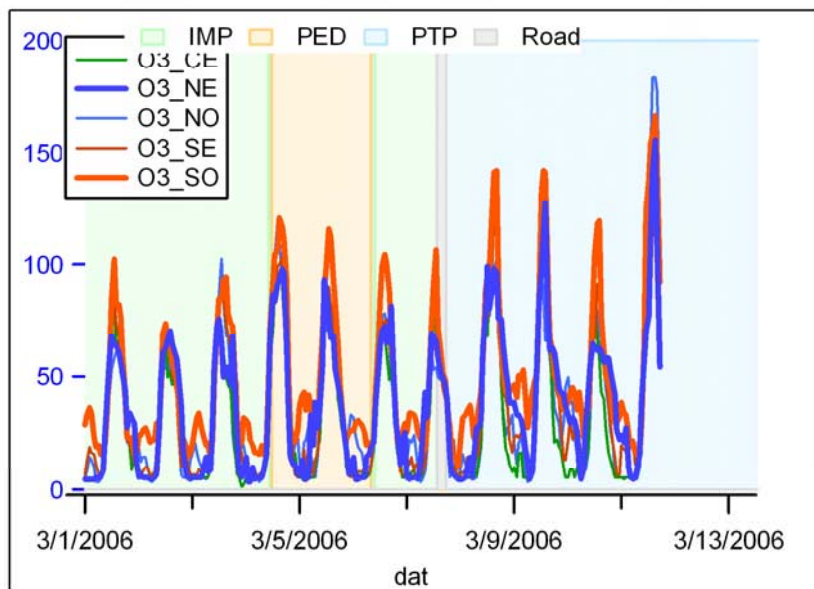
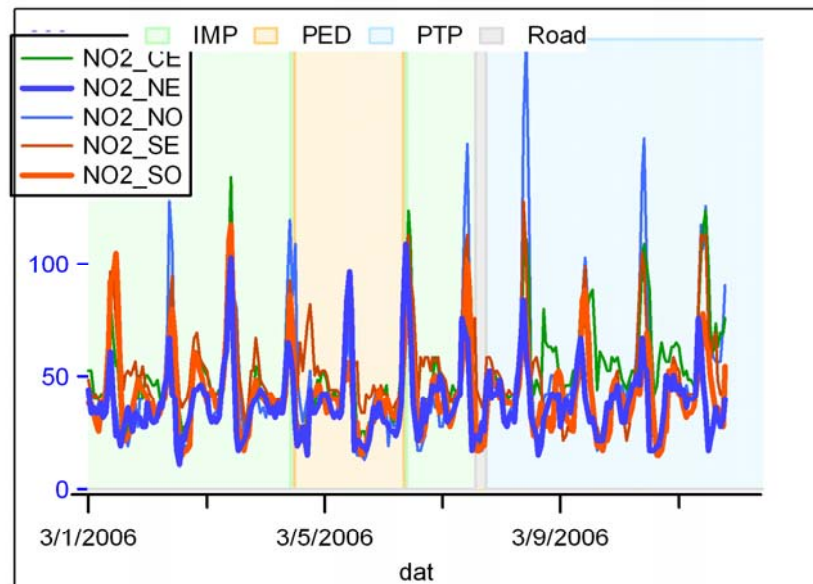
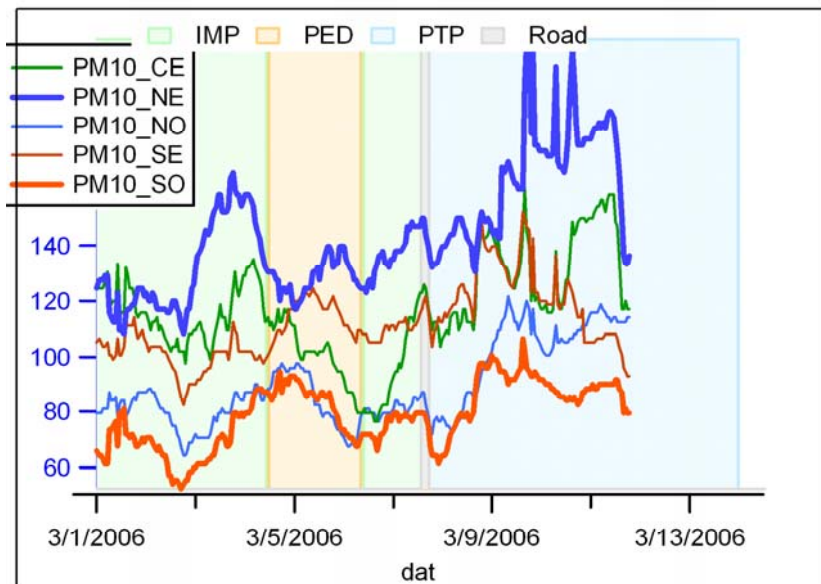
Sulfate Event



AMS Sulfate Loading



RAMA Correlation



Schedule

March 2006						
Sunday	Monday	Tuesday	Wednesday	Thursday	Friday	Saturday
26	27	28	1	2	3	4
			IMP		Pedregal	
5	6	7	8	9	10	11
Pedregal	IMP		Pico de Tres Padres			
12	13	14	15	16	17	18
Pico de Tres Padres		Anticipated PTP				
19	20	21	22	23	24	25
26	27	28	29	30	31	1